

GROUPS BROCHURE

) (*Dorchester Collection*

DORCHESTER COLLECTION GROUPS COMMITMENT

For bookings of 25 room nights receive:

ONE complimentary room night for every
25 room nights occupied*

TWO complimentary room upgrades
with VIP amenities**

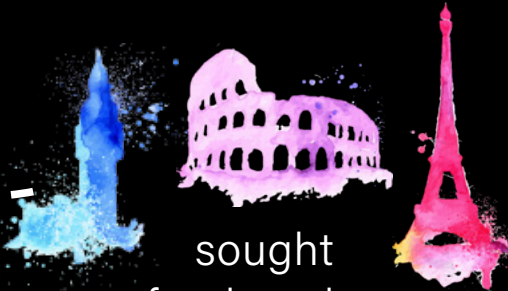
+ welcome amenity
for all rooms**

Blackout dates apply

** Hotel Principe di Savoia offers a maximum of 8 complimentary room nights for any group*

*** All amenities are selected by the hotel*

WHO WE ARE



sought
after locations

2.5

employees to
every guest

all hotels
comfortable
with groups of

30-50
rooms

very proud of the fact
that we are

NCT

cookie-cutter
style hotels



8 Michelin stars
worldwide



happening bars

what's more, the
quality of dining in our
meeting rooms is equally
exceptional



**OUR HOTELS
ARE THE CITY
THEY ARE IN**

LONDON

THE DORCHESTER | 45 PARK LANE

ASCOT

COWORTH PARK

PARIS

HÔTEL PLAZA ATHÉNÉE | LE MEURICE

MILAN

HOTEL PRINCIPE DI SAVOIA

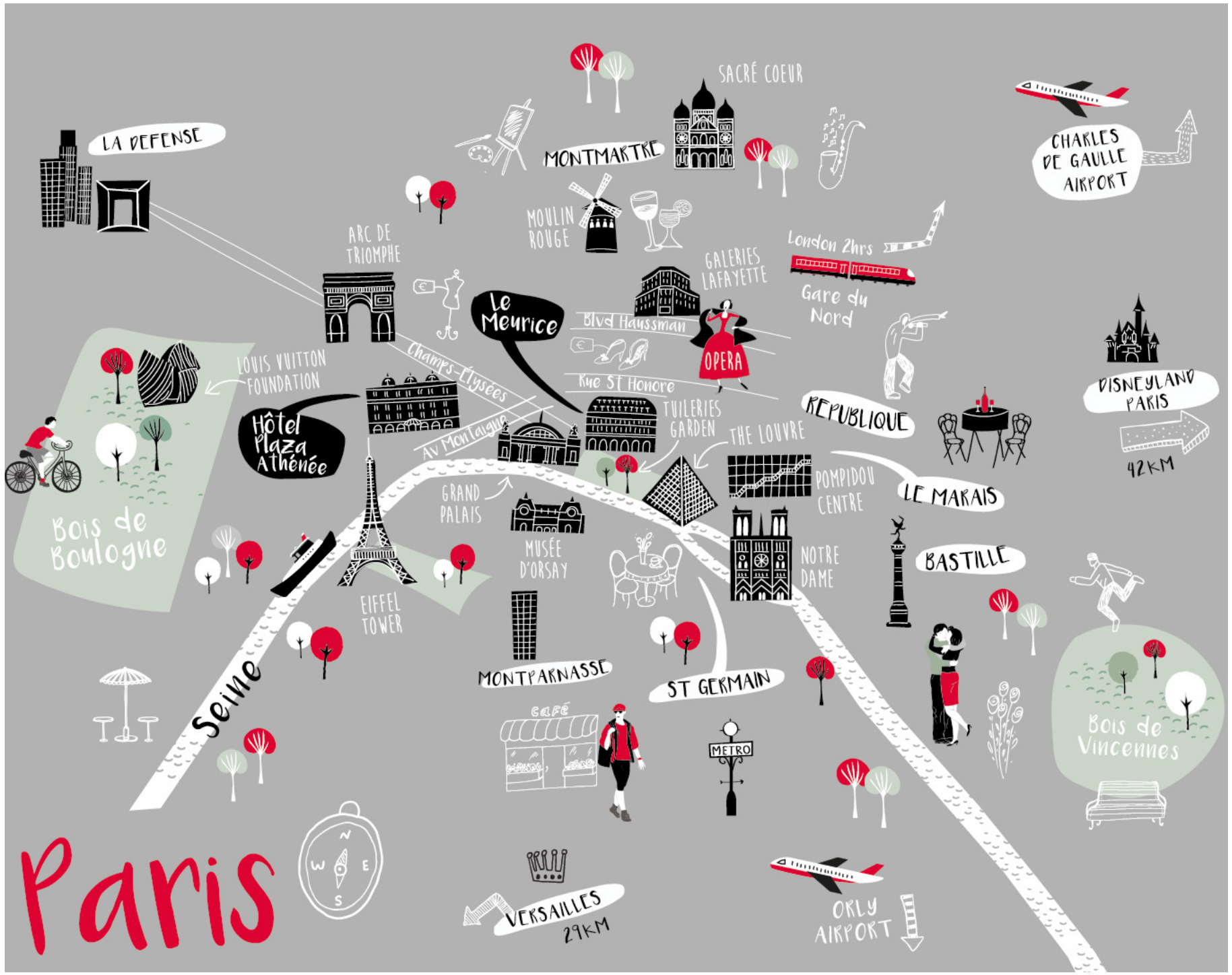
ROME

HOTEL EDEN

BEVERLY HILLS & LOS ANGELES

THE BEVERLY HILLS HOTEL | HOTEL BEL-AIR

Paris



DISCOVER PARIS

The beautiful city of wide, tree-lined boulevards, fascinating street life and breathtaking architecture. A place for love, for the arts, for fine food and fashion all celebrated within a seductive blend of proud history and contemporary culture.

SIGHTSEEING

EIFFEL TOWER

Built for the 1889 Exposition Universelle to commemorate the centennial of the Revolution, the 'Tour Eiffel' was the world's tallest structure until 1930.

RIVER SEINE

The lifeblood of this timeless city, a stroll along the Seine is a quintessential Parisian experience. Guests can also enjoy a two-hour private boat cruise.

PALAIS-ROYAL GARDEN

The Palais-Royal garden is a peaceful square in the heart of the city, built in 1633 and today recognised as a 'Jardins Remarquables' ('remarkable garden'). Don't miss the large inner courtyard which features a controversial art installation added in 1986 – 260 black and white striped octagonal columns.

PLACE DE LA CONCORDE

Built during the 18th century, Place de la Concorde is the largest public square in Paris and features an Egyptian obelisk, which is over 3,000 years old.

AVENUE DES CHAMPS ÉLYSÉES

Described as 'the most beautiful avenue in the world', this famous boulevard is lined with theatres, cafés and shops, stretching from Place de la Concorde to the famous Arc de Triomphe.

TUILERIES GARDEN

Designed in the 17th century as a royal garden, this is the oldest and most important formal garden in Paris. Separating the Louvre and the Place de la Concorde, visitors can enjoy the tranquil atmosphere and admire statues by Maillol, Rodin and Giacometti.

ART & CULTURE

THE LOUVRE

The Louvre dates back to the 12th century and attracts around 9m visitors every year. It is noted for its modern glass pyramid entrance and world-famous artwork, including the Mona Lisa.

MUSÉE D'ORSAY

Opened in 1986, after the renovation of the former Gare d'Orsay railway station, the Musée d'Orsay houses the world's largest collection of Impressionist and Post-Impressionist art.

BOURSE DE COMMERCE

Pritzker Prize-winning architect Tadao Ando has transformed this former stock exchange into a museum for the Pinault Collection, housing over 10,000 works from the 1960s to the present. Discover Modernist masterpieces and works by leading contemporary artists.

FOR THE FAMILY

LE PALAIS DE LA DÉCOUVERTE

The world's first interactive science museum has engaging exhibits on astronomy, biology, medicine, physics and more.

JARDIN D'ACCLIMATATION

For all the family, Jardin d'Acclimatation has spectacular gardens, playgrounds and thrilling rides.

CHÂTEAU DE VERSAILLES

Step back to the time of Louis XIV and take a tour of the Château de Versailles, located just outside Paris. There's also an Alain Ducasse restaurant and a must-see musical fountain show.





HÔTEL PLAZA ATHÉNÉE PARIS

THE HAUTE COUTURE ADDRESS IN PARIS

Hôtel Plaza Athénée symbolises the spirit of Paris. It's perfectly positioned near the Eiffel Tower and river Seine, on the prestigious tree-lined avenue Montaigne, home of Parisian Haute Couture. Since opening in 1913, the hotel has been the ultimate choice of those wishing to experience the energy and elegance of this unique city.





RESTAURANTS & BARS

JEAN IMBERT AU PLAZA ATHÉNÉE

At Michelin-starred Jean Imbert au Plaza Athénée diners are invited to embark on an immersive journey back to the ancient heart of French gastronomy, led by visionary chef Jean Imbert. The experience centres around a grand Royal Table, where the chef presents ancient recipes – some 250 years old – with a modern interpretation. To finish, Jean Imbert and pastry chefs Angelo Musa and Elisabeth Hot add a twist of personality to every timeless dessert.

LE RELAIS PLAZA

A Parisian institution since 1936, Le Relais Plaza is filled with history, glamour and the many stories of the famous faces to have dined here. Today, it remains an 'it' place in Paris, where chef Jean Imbert presents the perfect model of a classic Parisian brasserie.

LA COUR JARDIN

From May to September this uniquely seasonal restaurant offers Riviera-style cuisine, in a charming garden courtyard, surrounded by the famous 'Plaza red' geraniums. From December to January, guests can take on a twirl on a magical ice skating rink.

LA GALERIE

Radiating warmth and sophistication, La Galerie an elegant spot in which to savour breakfast, light lunch, gourmet afternoon tea or pre-dinner drinks.

LE BAR

Designed by Patrick Jouin and Sanjit Manku, this contemporary bar serves deliciously inventive cocktails. With its chic and vibrant atmosphere, it's the place to be and be seen in Paris.

LA TERRASSE MONTAIGNE

Ideally situated for admiring local Parisian fashionistas, this al fresco terrace restaurant runs along the façade of the hotel and specialises in light dishes and summer cuisine. Open March to November.

SPA

DIOR SPA PLAZA ATHÉNÉE

The stylish Dior Spa Plaza Athénée reflects the hotel's historic relationship with Christian Dior himself. Experience exceptional body and facial treatments, alongside a selection of Dior products.

ROOMS & SUITES

From Classic Single Rooms to the Royal Suite, the hotel offers a choice of 19 different room categories, including 154 guest rooms in classical Parisian style, and 54 suites with two main spectacular views. Windows open onto the chic, tree-lined avenue Montaigne with a side view of the Eiffel Tower or peaceful La Cour Jardin.

The hotel blends glamour and tradition with the most up-to-date technology. As luxury is all about choice, two different styles of decoration adorn the eight floors of the hotel, with classical style on the first six floors, and Art Deco on the top two floors.

SIGNATURE SUITES

The five signature suites offer incomparable luxury and style in the heart of Paris, with breathtaking views of the city.

HAUTE COUTURE EIFFEL SUITE

The spirit of Haute Couture lives on in every personalised, hand-tailored detail of this suite. High ceilings grace every room, while a breathtaking view of the Eiffel Tower is framed by the tall living room windows.



Dior Spa Plaza Athénée



Superior Room



Haute Couture Suite



EVENTS & MEETINGS

LE SALON HAUTE COUTURE

This beautiful ballroom provides an exceptional setting for special events, featuring plenty of natural daylight. Dine beneath seven stunning crystal chandeliers.

LE SALON CRÉATION A & B

These two elegant connecting rooms are perfect for board meetings or breakout rooms and benefit from natural daylight.

LE SALON ORGANZA

Ideal for meetings, cocktails, breakfasts and gastronomic dinners, Le Salon Organza's spacious interior, decorated in an opulent 18th century style, overlooks the picturesque courtyard.

LE SALON COLLECTION

This historic salon features spectacular wooden panelling and is ideal for business conferences, meetings and more intimate celebrations.

LE BAR

The exquisite bar is an eclectic choice for private events with its remarkable history and fashion-led design. Available for breakfast, lunch or cocktails.

LE CAVE DU PLAZA ATHÉNÉE

The hotel's impressive cellar, with a selection of 35,000 bottles of wine, is perfect for fun and informative wine tastings for up to 20 people.

SIGNATURE EIFFEL SUITE

With its wraparound terrace and the most spectacular view of the Eiffel Tower, the Signature Eiffel Suite is a wonderful spot for private events and celebrations for up to 10 guests, whether it's an intimate dinner in the dining room or rooftop cocktails.

LA COUR JARDIN

A hidden courtyard in the heart of the hotel, La Cour Jardin is a haven of peace in a busy day, where lush greenery and our signature red parasols create a charming setting for private events for up to 200 guests. From May to September the courtyard opens up for summer.

MEETING FACILITIES

High-speed internet access
Air-conditioning
Inset screen
Airplay system
Video projector
LCD projector

ADDITIONAL SERVICES

IN-ROOM TECHNOLOGY/ENTERTAINMENT

All new cable network
Interactive TV
Wi-Fi internet access

HOTEL SERVICES

24-hour concierge
Express check-in and check-out on request
Wine cellar with more than 35,000 bottles available for private wine tasting sessions
Business centre
Computer on request
Ice-skating rink in La Cour Jardin from December to January
VIP limousine service on request

GUEST SERVICES

Pillow and mattress pad menu
John Lobb shoe shine services
24-hour laundry and dry-cleaning service, three-hour express service
24-hour in-room dining
Special meals and amenities for children

ROOM	BANQUET	COCKTAIL	CABARET	THEATRE	CLASSROOM	BOARD-ROOM	U SHAPE	M ²	FT ²
Le Salon Organza	72	80	35	55	30	25/30	27/30	85	915
Le Salon Collection	27	40	21	35	18	19/22	21/24	55	592
Le Salon Haute Couture	110	180	63	130	75	50	51	150	1,615
Le Salon Création A	N/A	60	28	65	33	27/30	33/36	70	753
Le Salon Création B	N/A	15	7	N/A	12	10	9	30	323
Le Salon Création A&B	N/A	75	N/A	N/A	N/A	27/30	N/A	100	1,076
							Total	390	4,198





Le Salon Organza

HÔTEL PLAZA ATHÉNÉE SUGGESTED ITINERARY FOR GROUPS



DAY ONE

AFTERNOON

Check-in hosted in a private space with refreshments

EVENING

Welcome reception in La Cour Jardin surrounded by the famous 'Plaza red' flowers in summer or the exclusive ice skating rink in winter, before enjoying a French show at Le Lido



DAY TWO

MORNING

Breakfast served in one of the private rooms

Exclusive visit to the Louis Vuitton Foundation and its contemporary exhibits

Or

The iconic Louvre museum

AFTERNOON

Private visit to see some of the city's hidden treasures

EVENING

Bespoke dinner prepared by chef Jean Imbert



DAY THREE

MORNING

Breakfast-to-go prepared by the pastry team

AFTERNOON

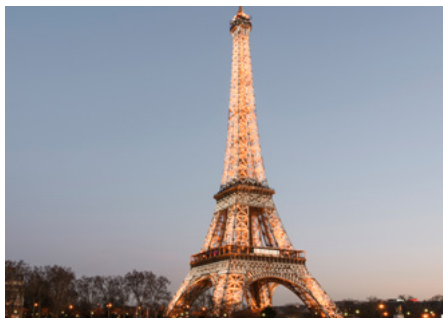
A day in the Champagne region visiting France's most famous cellars

Or

Discover the castles and vineyards of the Loire Valley

EVENING

Wine tasting in the hidden wine cellar followed by dinner at Le Relais Plaza



DAY FOUR

MORNING

Breakfast served in one of the private rooms, followed by shopping at leisure on avenue Montaigne. Glass of champagne in the private room of one of the avenue's most famous designer boutiques

AFTERNOON

Relax and unwind at Dior Spa Plaza Athénée followed by afternoon tea

EVENING

Dinner on a private cruise on the Seine, and a last chance to see the Eiffel Tower lit up at night



LOCATION

Located in the heart of Paris, Hôtel Plaza Athénée is within walking distance of two Metro stations – Alma Marceau (line 9) and Franklin D. Roosevelt (lines 1 and 9). The international train station at Gare du Nord (TGV/Eurostar, Thalys) is 20 minutes away, while the city's main airports are also within easy reach – Roissy-Charles de Gaulle is 40 minutes away, Orly only 30 minutes. A limousine service is available, including a VIP welcome at the airport and a hostess to assist with luggage and customs.

Groups & Events Department

+33 (0)1 53 67 65 67

events.HPA@dorchestercollection.com

PLEASE REFER TO LAST PAGE FOR YOUR REGIONAL SALES CONTACT

HÔTEL PLAZA ATHÉNÉE

25 avenue Montaigne,

75008 Paris, France

+33 (0)1 53 67 66 65

dorchestercollection.com

GLOBAL SALES

CORPORATE OFFICE

Dorchester Collection
Sixth Floor East
Lansdowne House
Berkeley Square
London W1J 6ER, UK

UK SALES

Chanelle Gale, Regional Sales Manager
+44 (0)20 7319 7529
chanelle.gale@dorchestercollection.com

EUROPE SALES

Alison Rutherford, Regional Sales Director
+44 (0)7867 456 335
alison.rutherford@dorchestercollection.com

MIDDLE EAST, RUSSIA & CIS SALES

Daniel Snell, Regional Sales Director
+7 964 500 9212
daniel.snell@dorchestercollection.com

NORTH AMERICA SALES

Dorchester Collection
1040 1st Avenue
PO Box 400
New York, NY 10022

WEST COAST, MIDWEST AND CANADA

Wendy Gillotti, Regional Sales Director
+1 646 532 3801
wendy.gillotti@dorchestercollection.com

EAST COAST

Nuria Candel, Regional Sales Director
+1 646 532 3806
nuria.candel@dorchestercollection.com

SOUTH AMERICA SALES

Dorchester Collection
Calle los Libertadores 445,
San Isidro, Lima 27 Peru

Gloria Mendez, Regional Sales Director
+51 1 440 3809
gloria.mendez@dorchestercollection.com

CHINA SALES

Dorchester Collection
Suite 508A Shanghai Centre
West Building
1376 Nanjing Road (W),
Shanghai 200040, China

Carl Ju, Regional Sales Director
+86 21 62798100
chinasales.DC@dorchestercollection.com

ASPAC SALES

Dorchester Collection
PO Box 294
Epping NSW 1710, Australia

Parris Fotias, Regional Sales Director
+61 (0)2 8812 2263
parris.fotias@dorchestercollection.com

LONDON

The Dorchester
45 Park Lane

ASCOT

Coworth Park

PARIS

Le Meurice
Hôtel Plaza Athénée

MILAN

Hotel Principe di Savoia

ROME

Hotel Eden

BEVERLY HILLS

The Beverly Hills Hotel

LOS ANGELES

Hotel Bel-Air

DUBAI

The Lana (opening 2022)